

Production Report 2010

BAWAC continues to develop & provide a diversity of opportunities for our client/employees!

We continue to ask all “*Friends of BAWAC*” for help in referring new or additional business opportunities to us!

We are especially interested in projects where BAWAC might team up with area businesses to add value and provide goods to various commercial & government purchasers!

Thanks for thinking of us over these many years, and please, please, keep those good thoughts coming!!

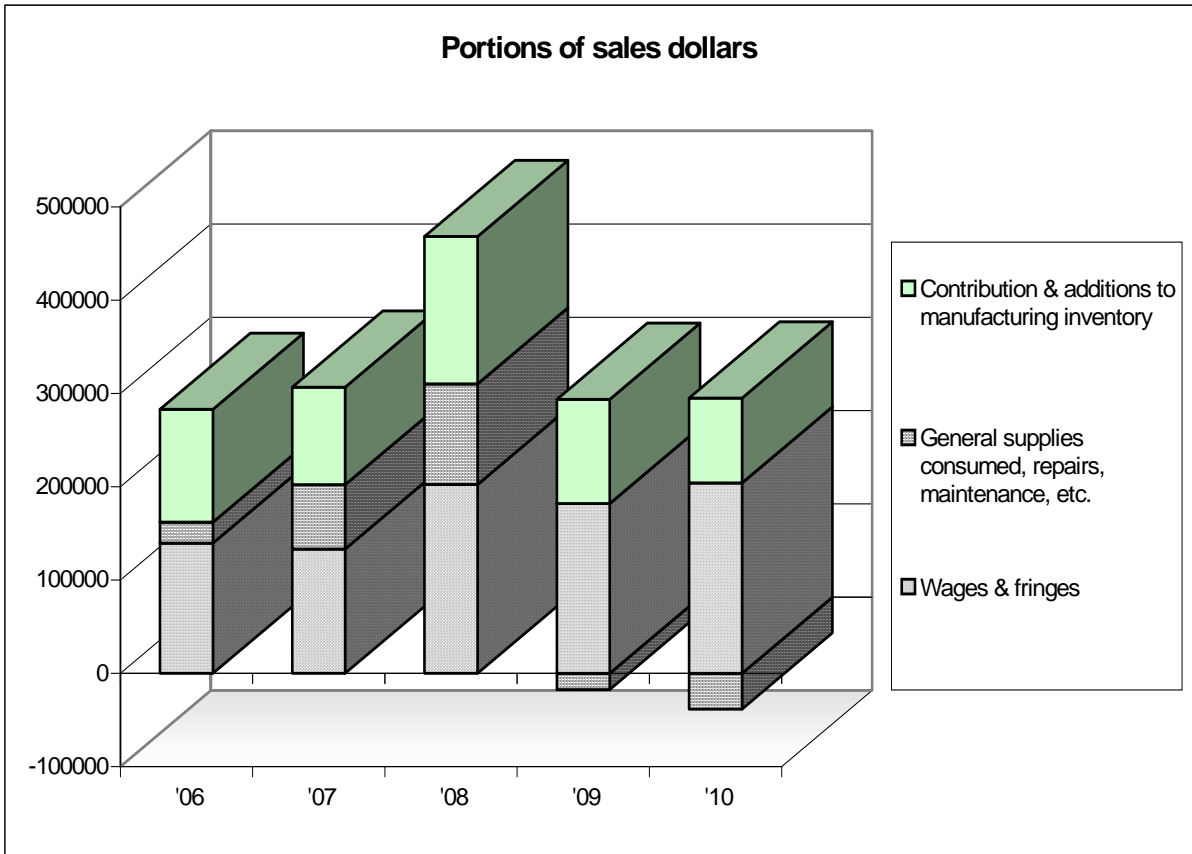
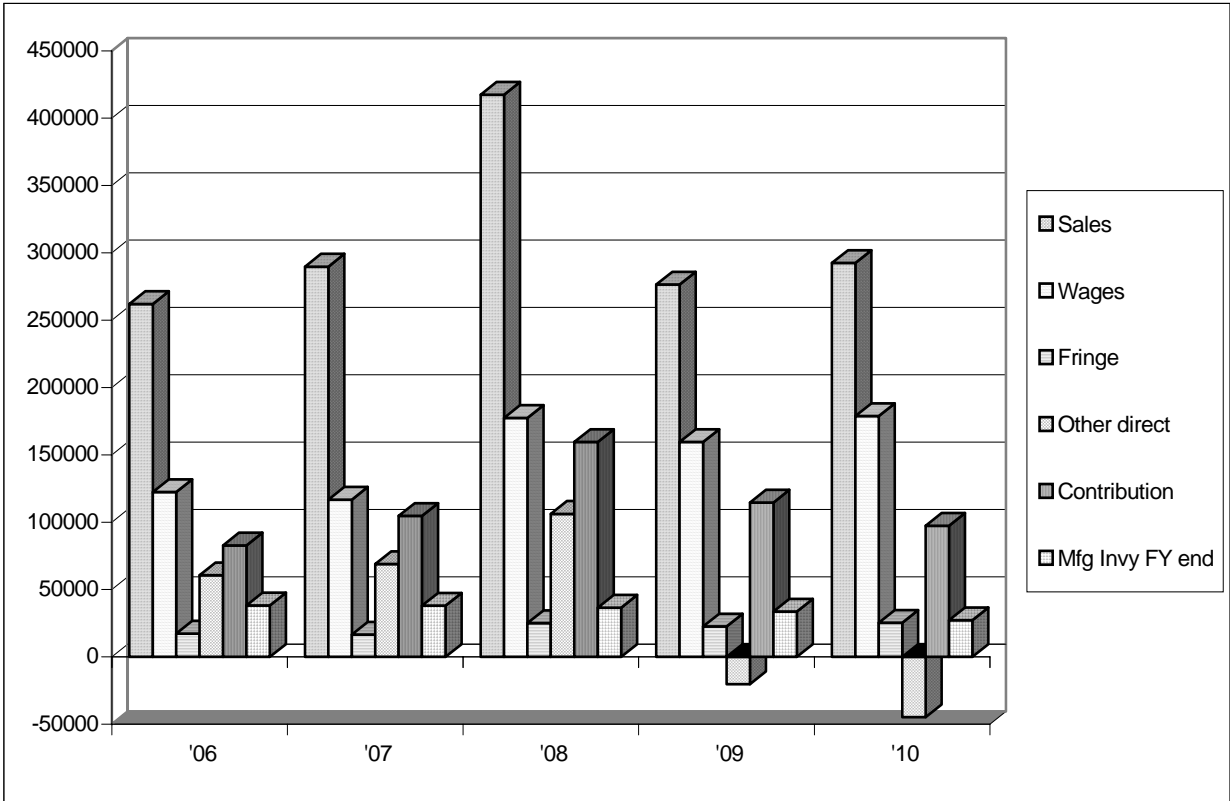
ACTIVE CONTRACTORS *(during the fiscal year)*

OPERATION TYPES

PRODUCT AREAS

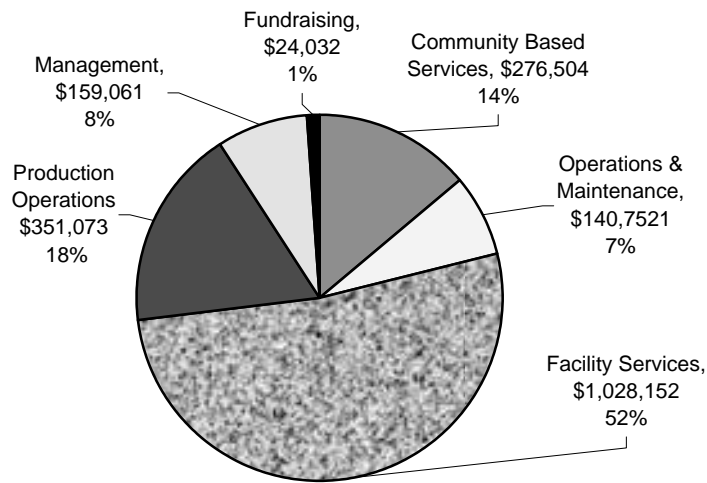
ACTIVE CONTRACTORS <i>(during the fiscal year)</i>	OPERATION TYPES	PRODUCT AREAS
Ancra International	Assemble, package	Cargo securing devices
Arvin/Meritor Automotive	Assemble, package	Warranty kits
Automotive Service Products	Assemble, package	Key tags & rings
Camco	Assemble, package	‘Green’ cleaning products & displays
Crown Envelope	Count, hole drill, shrink wrap	Specialty envelopes
Directions Research	Label, pack, logistics	Consumer market sampling materials
Duro Bag Company	Collate, insert, package	Specialty paper bags & displays
Emerson Power Transmission	Label, pack in sleeves	Drive belts & related
General Cable	Sample kit build / Assemble	Cable, Fiber Optics/Grommet zip bags
HK Systems	Fabricate, Assemble	Pre-engineered conveyors
Intelligent Products, Inc.	Assemble, package	<i>Mutt-Mitt</i> products
Kumon North America	Assemble, package	Specialty educational items
Lingo Manufacturing	Assemble, package	Displays, hardware kits, carton sets
Lohr Printing	Labeling	Bags, Packaging
Innov8	Assemble	Zipper bags with grommets
Innovative Products	Size, count, package	Wiping cloths
Meritor Heavy Vehicle Systems	Assemble, package	Warranty kits
Newport Converting	Specialty assembly	Niche market sorbents and wipers
Northern Ky Water Svc District	Assemble, rebuild	Meter shop helper
NorthKey	Janitorial, custodial	Office building cleaning
Petron	Repackage	Plastic pellets
Post Glover LifeLink	Assemble	Electrical components
Prime Logistics	Repackage	Various toy products
Rotek	Assemble	Bearing “cages”
SoffSeal	Size, package	Automotive weather stripping
Solus Industrial Automation	Assemble	<i>Bead-Wall</i> conveyor products
Sphere Group	Order fulfillment, logistics	Specialty cleaning products
Wallace Designs	Assemble, package, logistics	Unique gift items

Production: Five Year Snapshots



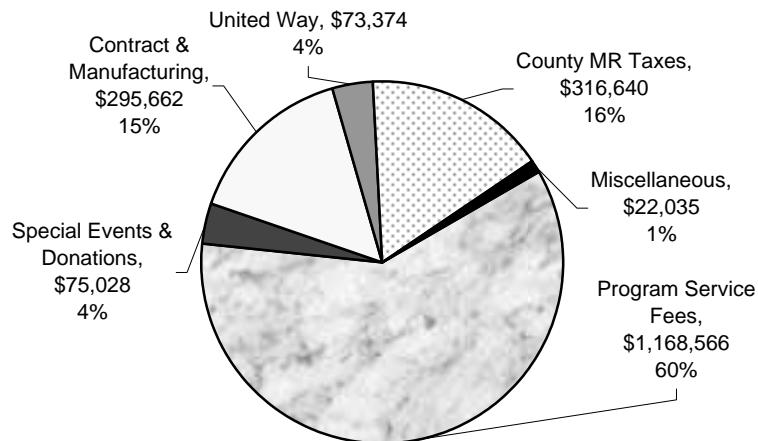
Financial Report 2010

Program Expenses 2009 - 2010



Total Expense = \$1,979,574

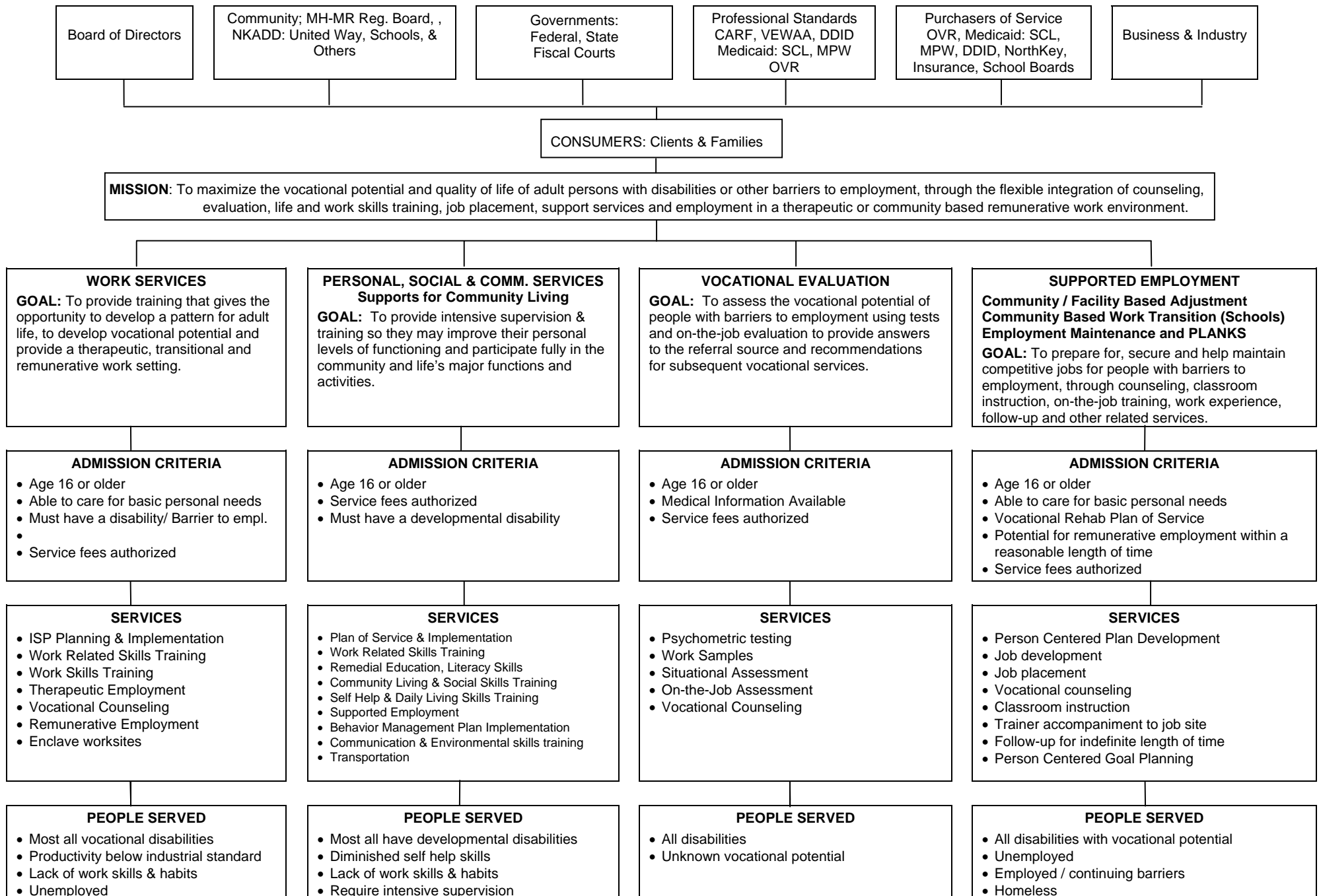
Program Revenue 2009 - 2010



Total Revenue = \$1,951,607

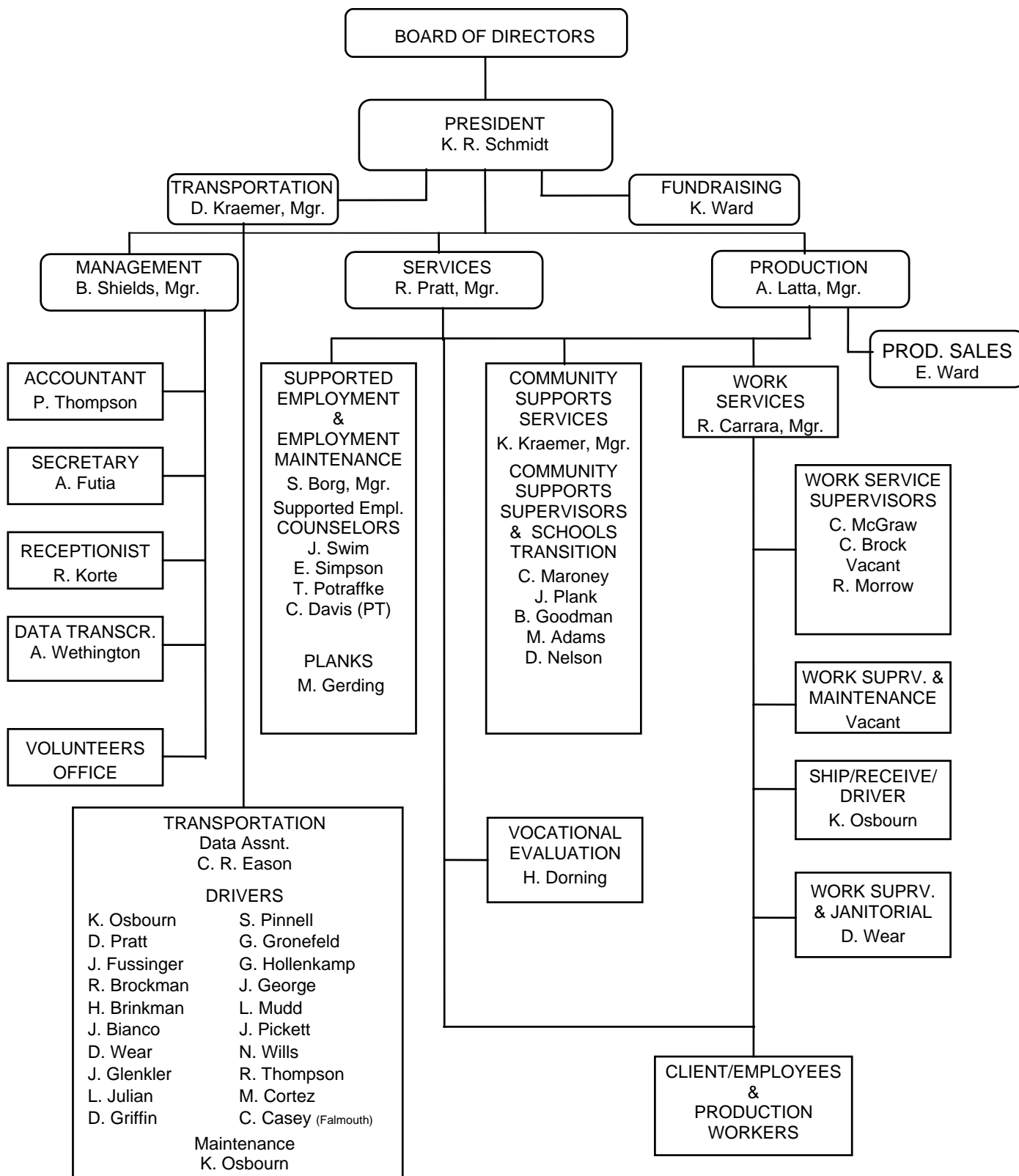
Operating Surplus (Deficit) = (\$27,967)
Net Assets End of Year = \$547,717

BAWAC, Inc. Services Plan 2010 - 2011





2010 - 2011 Organizational Chart



NOTE: Only direct lines of authority are indicated. Functional authority and working relationships are not shown.